



# Sheep Hay Cradle – 2.5m

## Half Skirt Sheet Base and Half Skirt Mesh Base

### Product Overview:

Traditional feeding of hay on the ground leaves up to 30% of the valuable feed wasted through fouling by livestock. A cradle keeps your feed elevated, and the galvanised sheet skirt captures loose hay to minimise waste. Don't muck around with a fragile import that will flex and bend after the first use. Paton's cradle design has 55 years of agricultural experience and valued customer feedback behind it.

Conserve hay and maximise your feed potential at a low cost with a hay cradle. Designed to the **correct height and dimensions specifically for sheep**, Paton Hay Cradles are the best low cost feeding solution for your flock. We stand behind our product and we stand behind its strength and build quality.



Half Skirt Sheet Base – Product Code: HCS25G

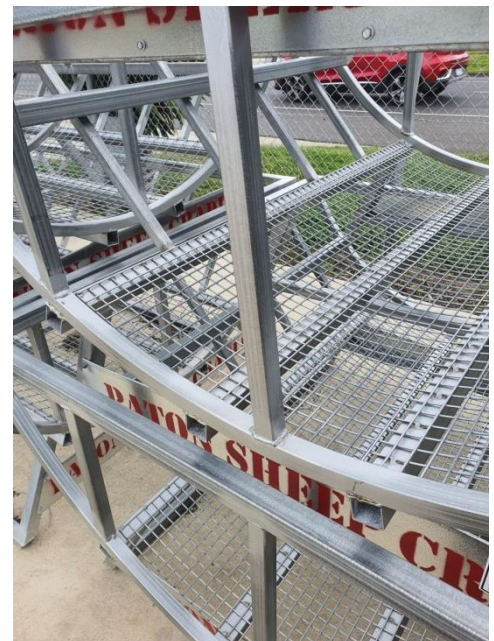


### KEY FEATURES

- 2 round bales or 1 large square bale capacity
- Reduces wastage by 30%
- Keep hay elevated
- Easy to pick up and reposition
- Half skirt sheet floor or Half skirt mesh floor
- Fully galvanised finish
- Light weight structure
- Structurally strong and long lasting
- Suitable for sheep, goats, horses

### UNIT DIMENSIONS

- Length: 2500mm
- Height: 800mm
- Trough Base Height: 300mm
- Width 1600mm
- Bar Spacing: 265mm



Half Skirt Mesh Base – Product Code: HCS25M